

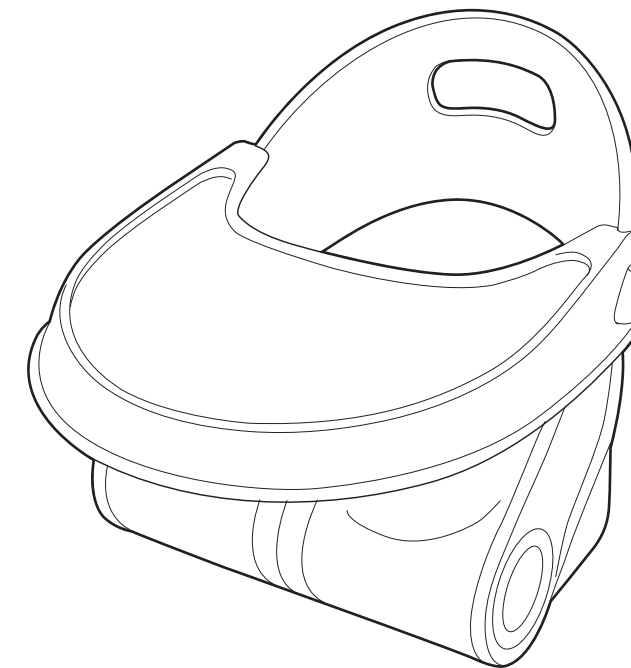
Read all instructions before assembly and use of booster seat. Keep instructions for future use.

Adult Assembly Required.

For product support call (401) 671-6551 or email at customerservice@summerinfant.com

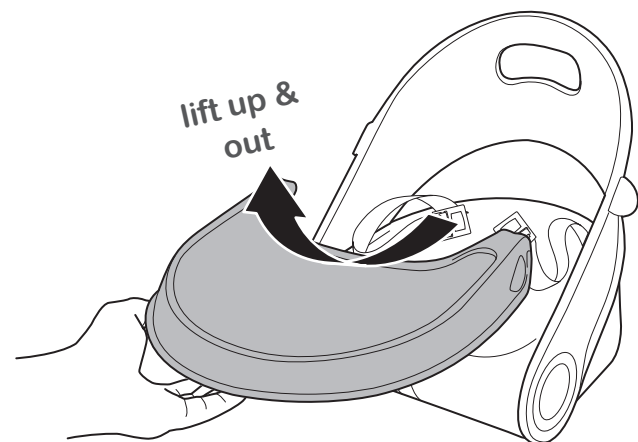
Keep small parts away from children.

From approximately 6 months up to 37 lbs.

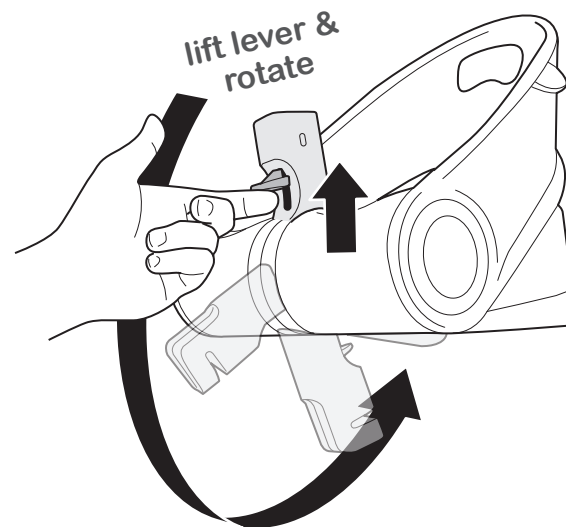


Sit N' Style™ Booster Seat OWNER'S MANUAL

booster tray release (continued):

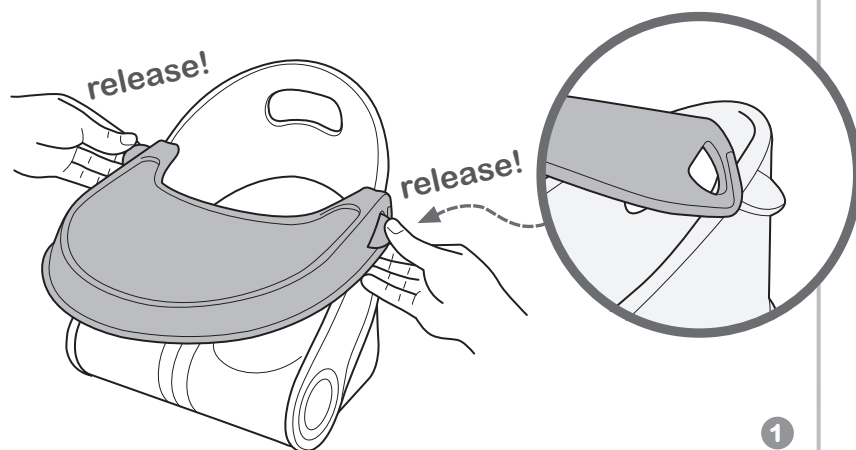


3

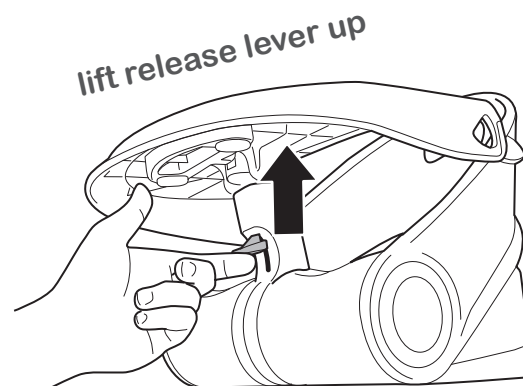


4

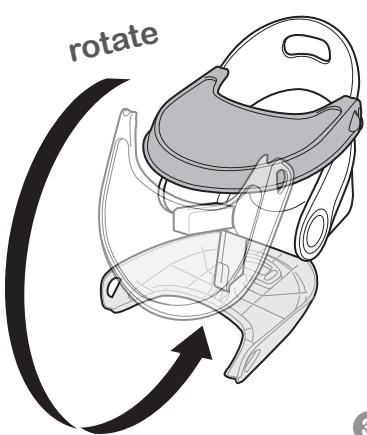
fold booster into travel mode:



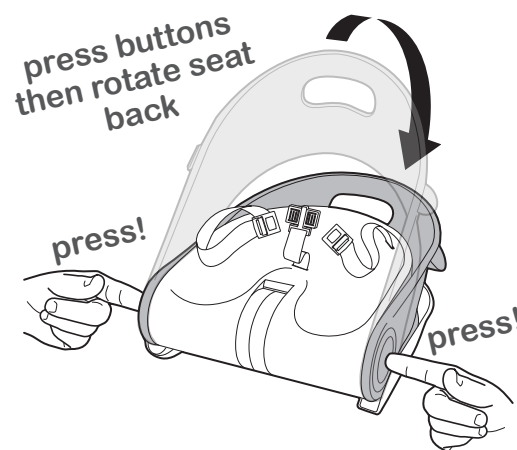
1



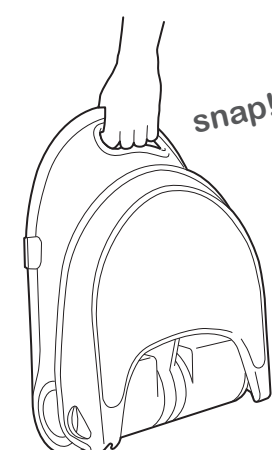
2



3



4



5

cleaning and maintenance:

- Wipe booster seat frame clean with a damp cloth.
- Tray dishwasher safe (top rack).

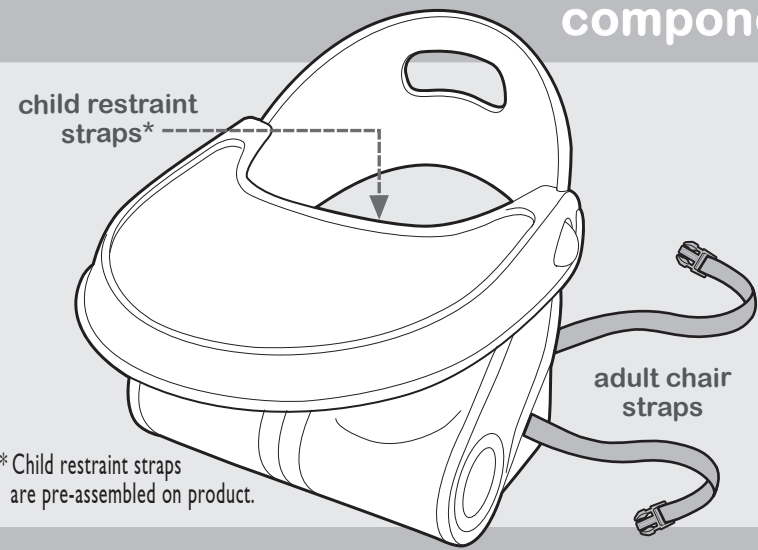
Summer Infant (USA), Inc.
1275 Park East Drive
Woonsocket, RI 02895
(401) 671-6551
© 2018 Summer Infant (USA), Inc.

Colors and styles may vary.
MADE IN CHINA.
12/18

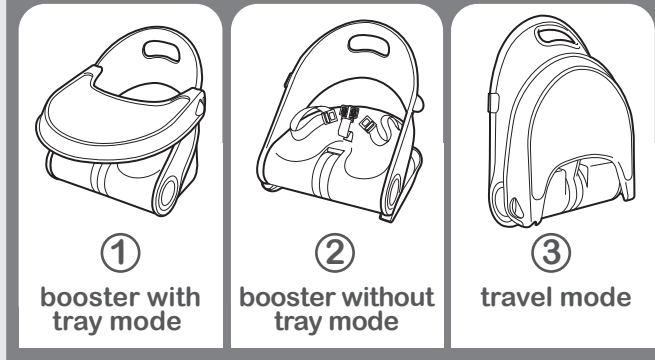
⚠ WARNING

- Children have suffered **head injuries**, including skull fractures, after falling with or from booster seats.
- Check that booster seat is **securely attached** to adult chair before each use.
- **Always use restraint** until child is able to get in and out of booster seat without help. Adjust to fit snugly.
- **Never allow child to push away from table.**
- **Never lift and carry child** in booster seat.
- **Stay near and watch your child** during use.
- **ALWAYS secure BOTH back and seat straps** to an adult chair.
- **NEVER leave child unattended and without supervision.**
- **NEVER use this product as a car seat or bath seat**, on a table or counter top, stool, swivel chair, folding chair, unstable chair or any other chair where the straps cannot secure it properly.
- Use this product only with children capable of sitting upright unassisted.
- Prevent serious injury or death. Do not use in motor vehicles.
- Minimum dimensions of adult chair that the booster seat shall be attached to: Seat Width: 13.5 in and Depth: 13 in, and the Backrest Height is at least 10 in tall.
- Until child is able to get in and out of the booster seat without help (about 2 1/2 years old), the child should be secured in the booster seat at all times by the restraining system. The tray is not designed to hold the child in the chair.
- Check that both the floor and seat of the adult chair are level before installing the booster seat.
- Prevent finger injury: Keep child away from chair when unfolding or folding seat. Keep child's hands away when installing the tray.
- Once installed, check the security and position of the booster seat.
- Do not use this booster unless all components are correctly fitted and adjusted.
- Discontinue use of product if damaged, broken, or disassembled.

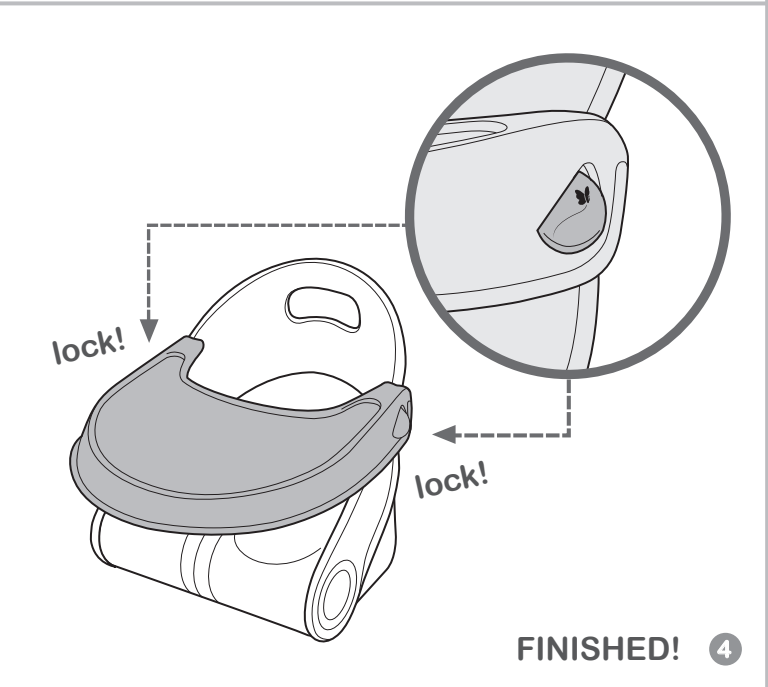
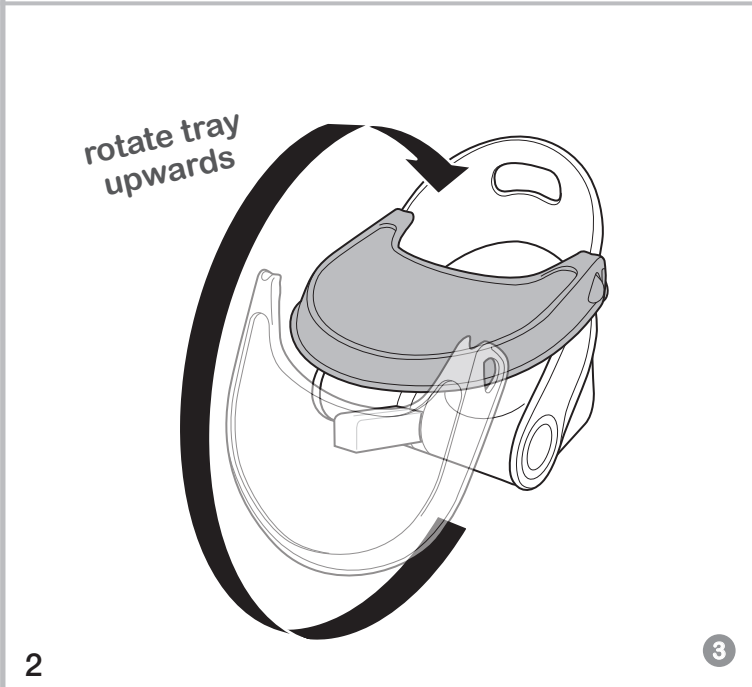
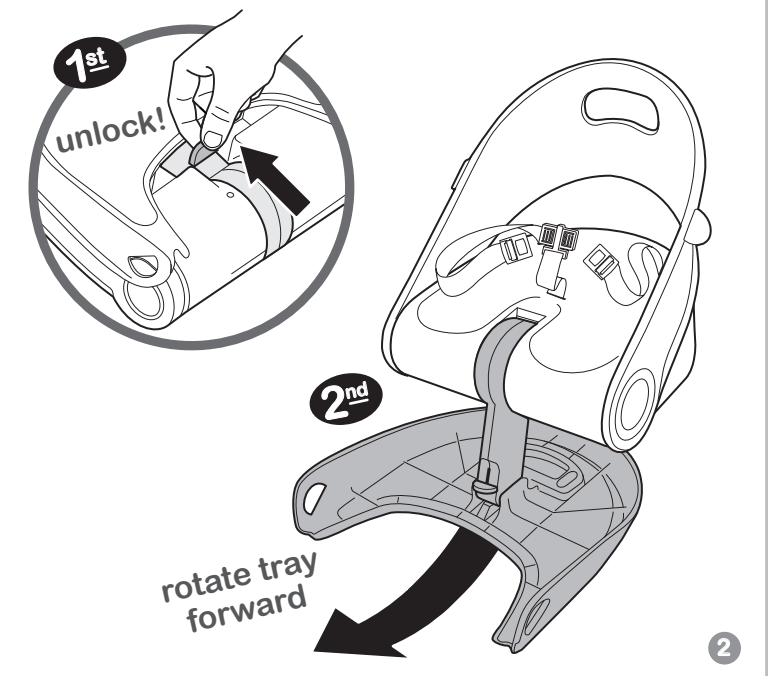
components:



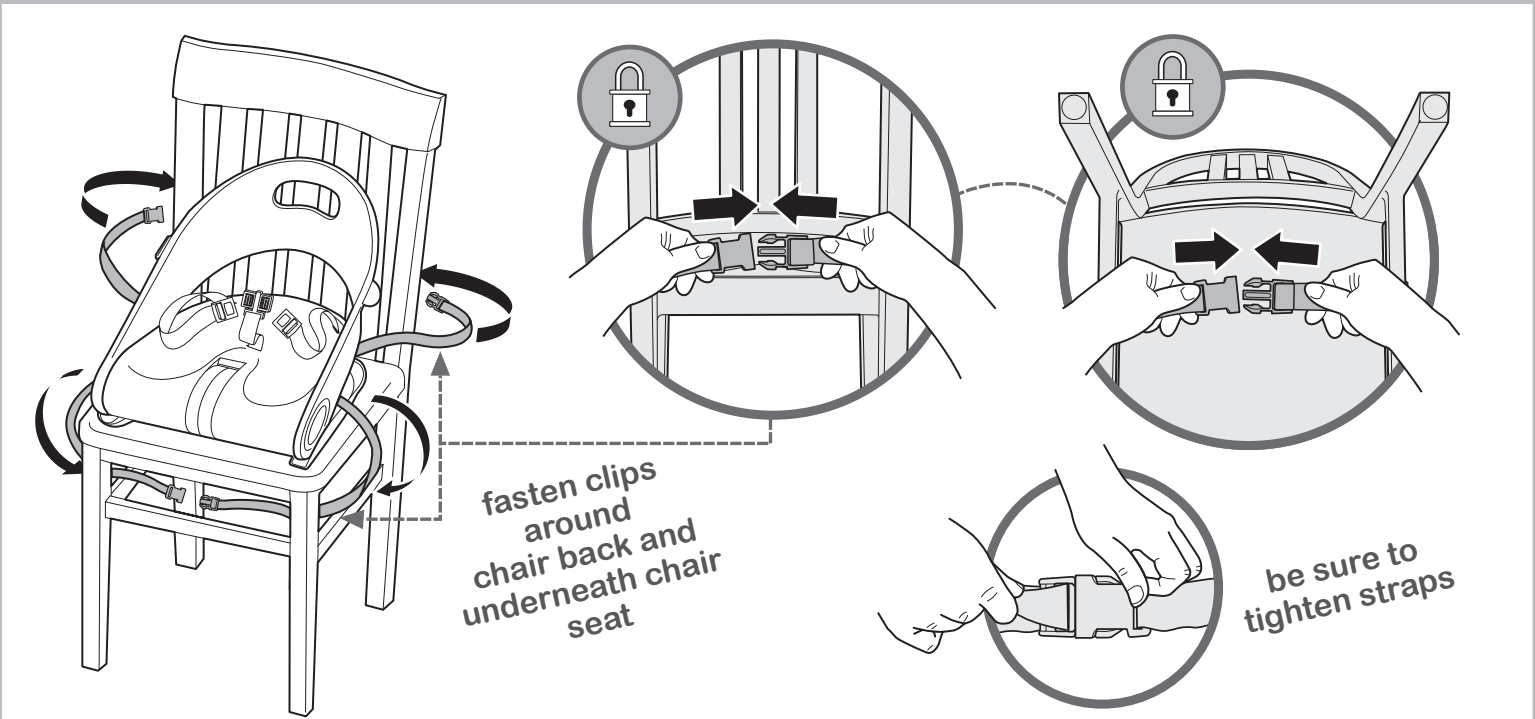
3 booster modes:



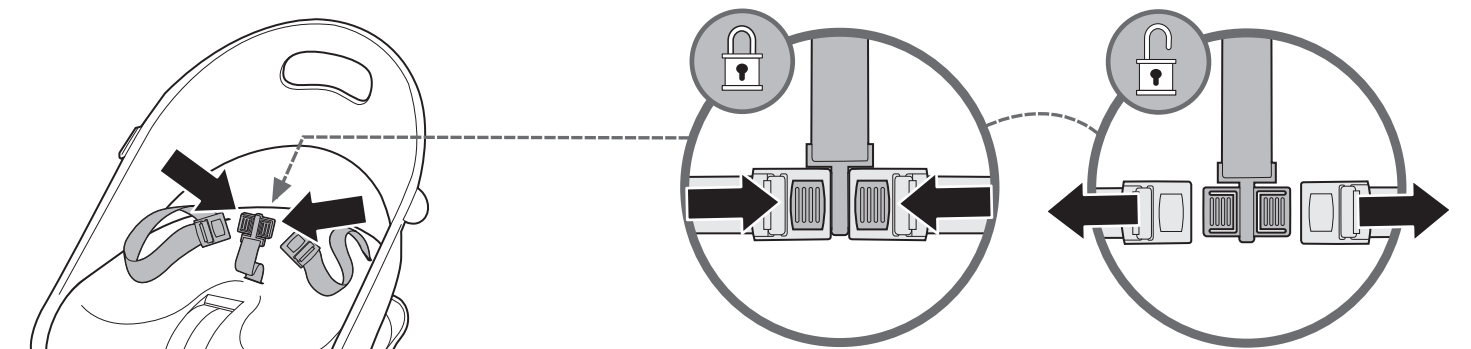
setup:



securing booster to chair:



child restraint:



⚠ WARNING
Prevent serious injury or death from falls or sliding out.
Always use restraint system.

booster tray release:

